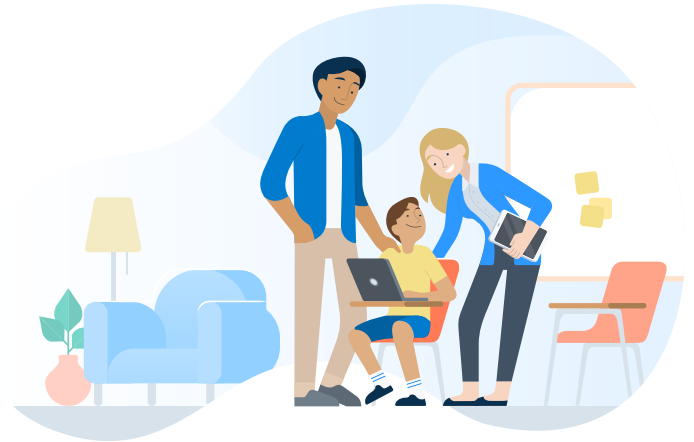


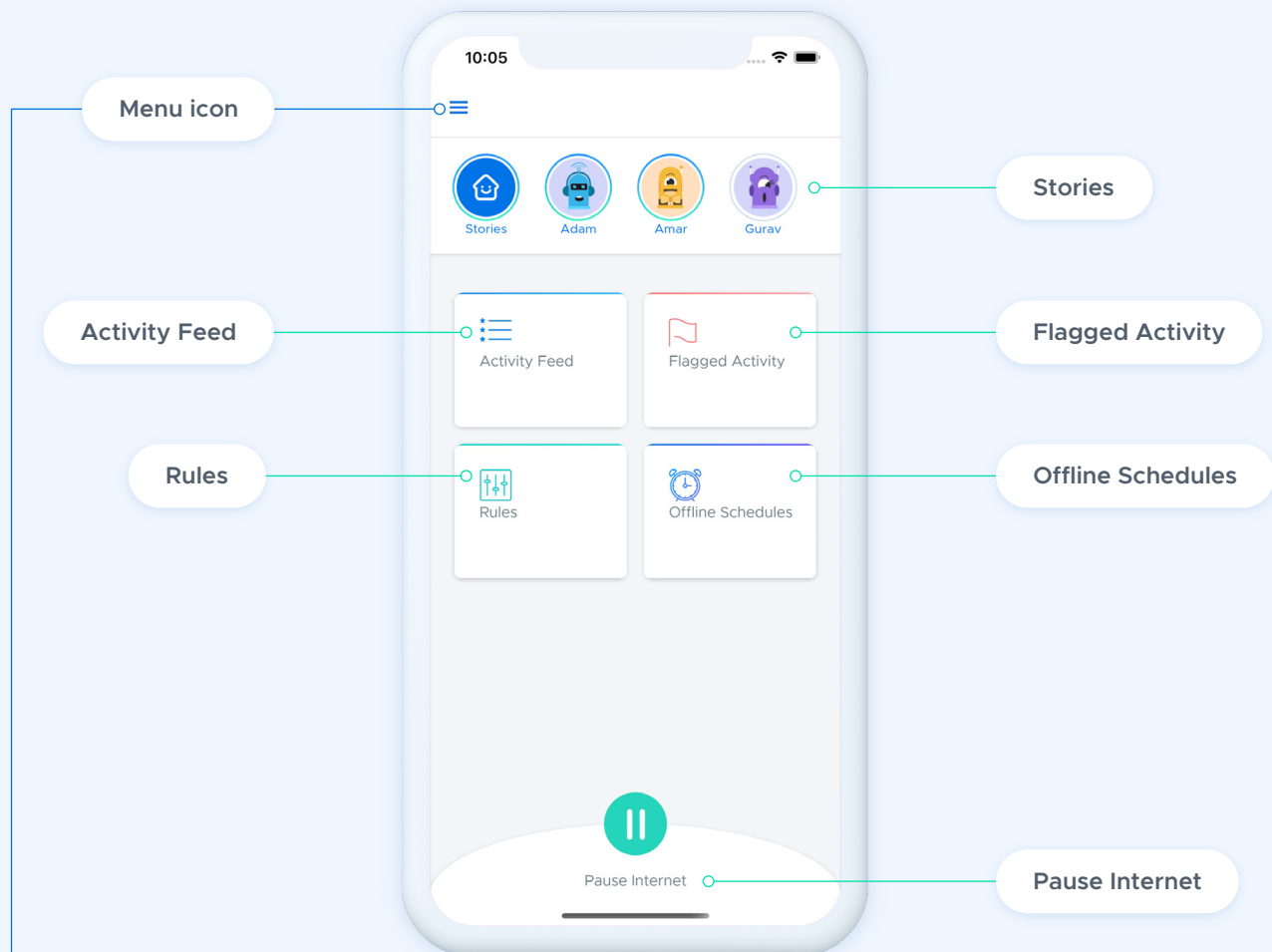
App walkthrough for administrators and parents

This simple guide is designed to help parents get the most out of Securly Home, a powerful tool for keeping students safe on their school-issued devices at home.



Home screen

After logging in, parents will see the main dashboard, displaying the five main features of the Securly Home app:



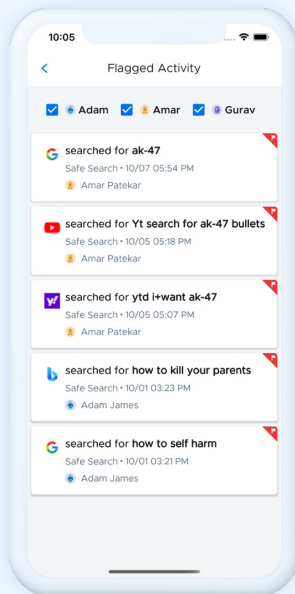
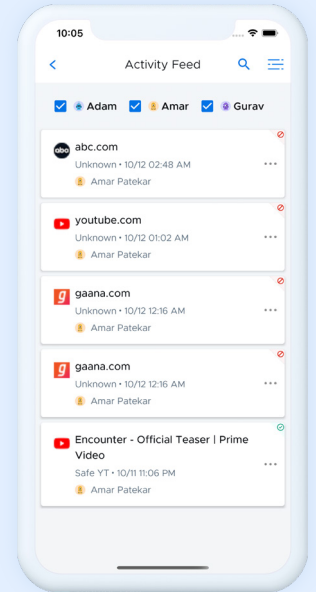
They will also see a **menu icon** in the top left corner of the screen, from which they can navigate between features, modify settings, and find support.

Activity Feed

The Activity Feed provides a real-time view of a child's online activity. Activities are displayed in descending order starting with the most recent activity. Each activity tile displays the URL of the activity, the content category it belongs to, the date and time of the activity, and the user email address associated with the activity.

Switch between multiple users (if applicable) by tapping the cap-and-gown icons along the top of the screen.

In the top right corner, parents will find options to search and filter activities. Tap the magnifying glass icon to search. Tap the filter icon to make selections to only display certain types of activities in your feed.



Flagged Activities

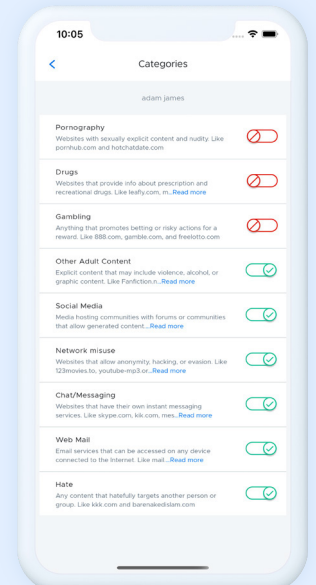
The Flagged Activities section shows parents a list of activities that the Secury AI flagged as indicative of self-harm or bullying. This feature of the Secury Home app gives parents a glimpse into potentially serious activities relating to their child's wellbeing.

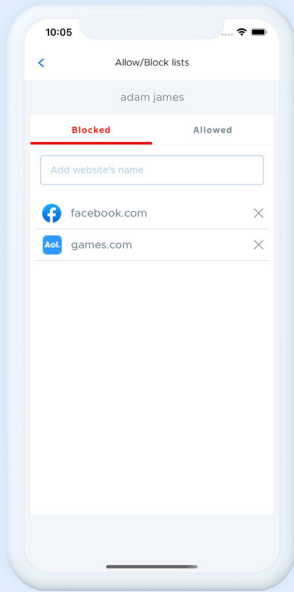
Rules

The Rules section allows parents to set specific rules for their child's school-issued devices.

The Categories tab gives parents the ability to toggle on or off a set of predefined categories (Pornography, Drugs, Gambling, etc.) to block or allow large groups of content with one tap. Sites belonging to a blocked category will not be accessible on the child's device.

The Categories tab also provides options to toggle on or off site- and search engine-specific settings for popular websites, including Google's Safe Search, YouTube's Safe Video, and more. Enabling these settings provides an extra layer of security for students online.



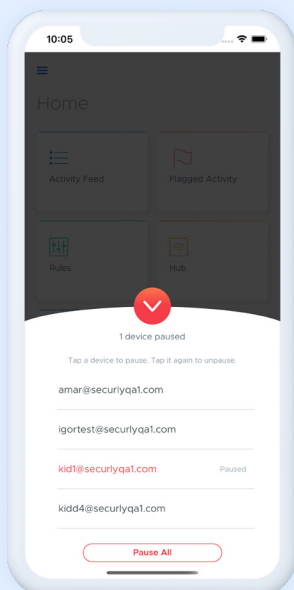
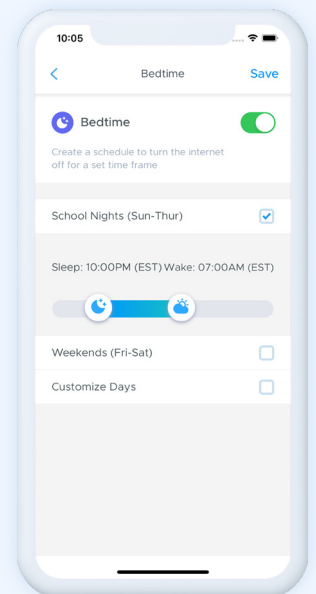


The Sites tab allows parents to enter specific web addresses to Block or Allow simply by typing the URL into the field provided. Sites can be removed from either list by tapping the trash can icon.

Offline schedules

The Offline Schedules section allows parents to set specific time windows for their child's internet access. Whether bedtime or family time, parents can use this feature to encourage their children to take a break from devices.

Turning on the "Bedtime" setting lets users create an offline schedule tailored to their needs. Parents can quickly select options to set schedules for School Nights and Weekends, or build their own custom schedule from scratch.



Pause Internet

The Pause Internet feature is accessed from the bottom of the Home screen.

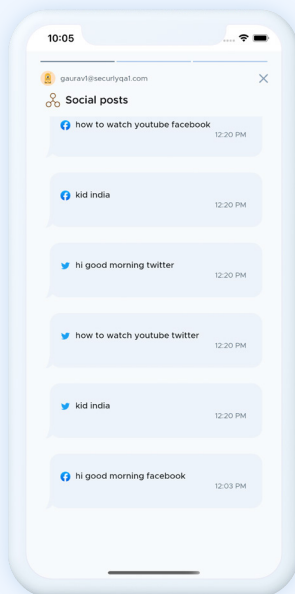
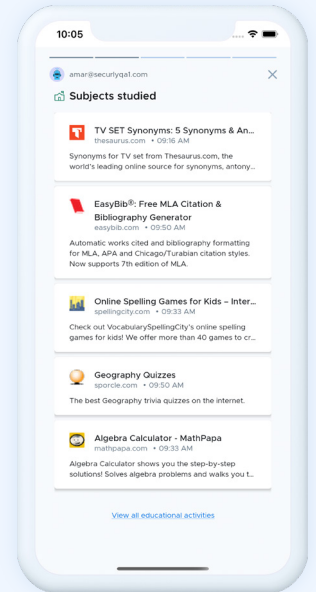
Tapping the Pause button will bring up a small window with all connected devices listed.

To pause internet connectivity for a device, simply tap that device in the list. To unpaue, tap again.

To hide the Pause Internet menu, simply tap the down-arrow at the top of the window.

Stories

Stories allows you to quickly see curated summaries of your child's online activity for that day. Each story highlights particular categories of sites or activities. Swipe left to advance and right to go back. If there is a lot of content to view, a link will appear at the bottom of the screen to view more.

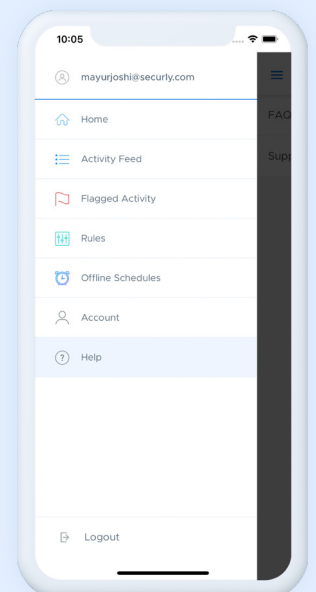


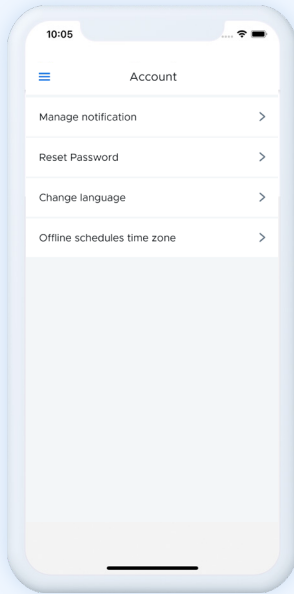
To switch to a different kid's story (if applicable), tap the X in the upper right corner and select a different story to view. Stories that you have not yet viewed will have a highlighted border around them. Stories refresh daily at 4pm.

Menu

Tapping the three-line "Hamburger" button in the top left corner will slide out a quick menu for easy access to the key features of Secury Home, as well as links to Account settings and Help.

At the top of this menu, parents will see the account email address they're logged in with. At the bottom of the menu, there's a button to log out as well.





Account

The Account section of Secury Home lets parents adjust settings for the Secury Home experience. After tapping “Account” from the side menu, parents will see four subpages:

Manage notifications

Reset password

Change language

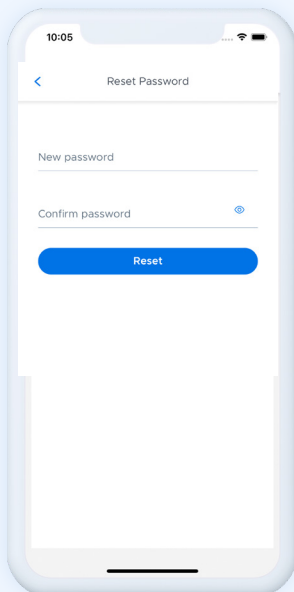
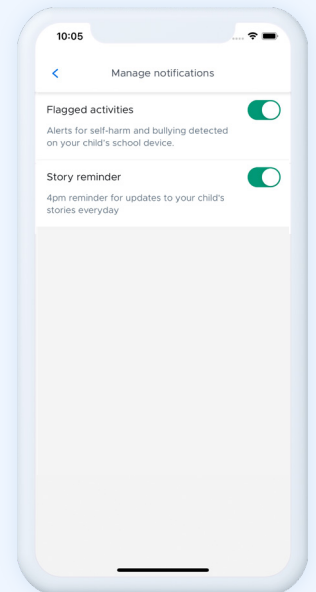
Offline schedules time zone

Manage notifications

Here parents can set the types of push notifications they wish to receive for different types of alerts.

Enabling “Flagged Activities” notifications will push an alert to the parent’s device when activity indicating bullying or self-harm is detected on a child’s device.

Enabling “Story reminder” notifications will push an alert to the parent’s device whenever there are new Stories available to view in the home app (Stories refresh at 4pm).

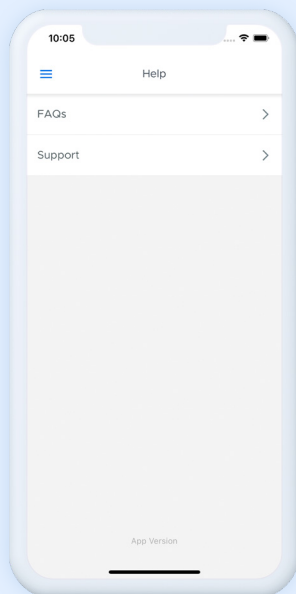
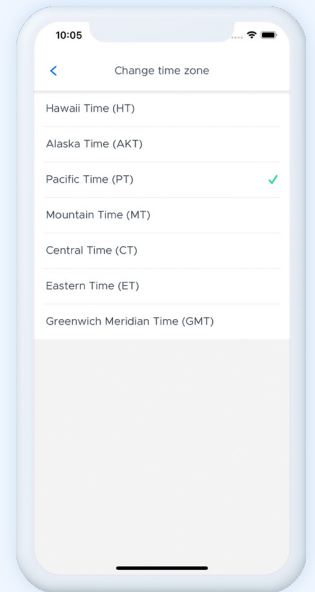


Change your password

Here parents can update the password they use to log into Secury Home.

Offline schedules time zone

Here parents can select the time zone they want their offline schedules to be based on. In most instances, parents should just select the time zone in which they live.



Help

The Help section of the Securly Home app gives parents a direct connection to a vast library of Securly platform-related knowledge, with resources developed by the Securly team of experts—including the ability to reach out to Securly support directly.

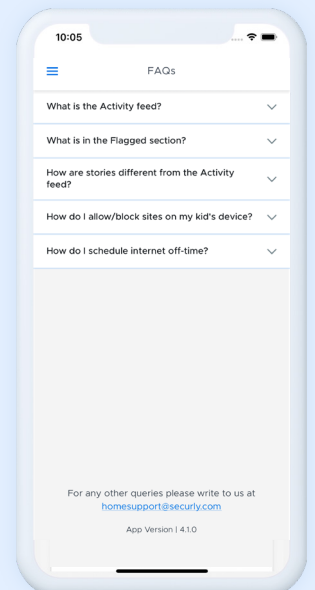
After tapping “Help” from the side menu, parents will see two subpages:

FAQs

Support

FAQs

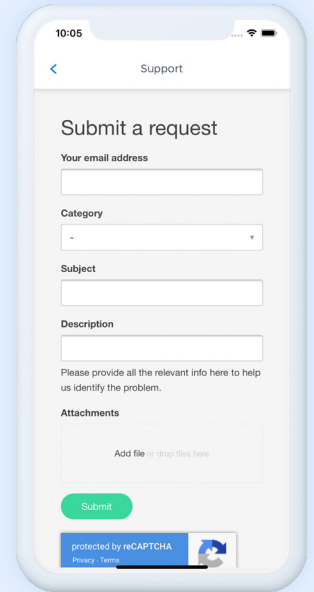
The FAQs page allows parents to see answers to frequently asked questions about the Securly Home app. Tap on any question to expand the answer.



Support

The Help page allows parents to reach out directly to Securly for help with a specific issue they may be having, especially in cases where they can't find the answers via the FAQ section.

Parents can fill out the provided fields, give a description of the issue they are having, and submit it for a response by the Securly team.



10:05 Support

Submit a request

Your email address

Category
-

Subject

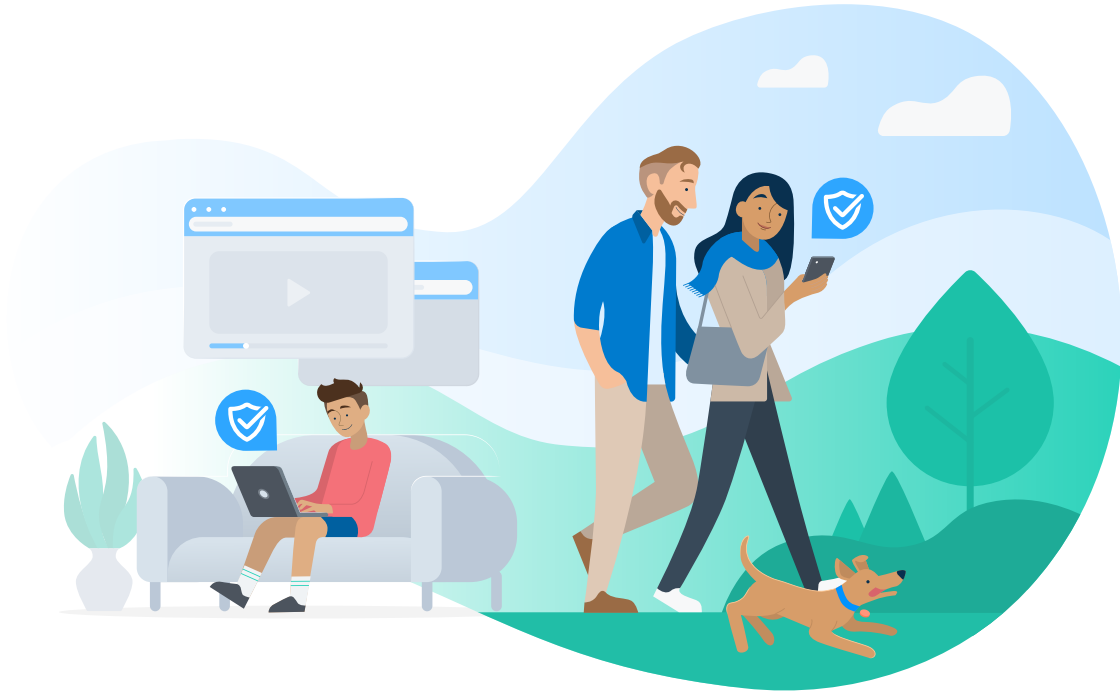
Description

Please provide all the relevant info here to help us identify the problem.

Attachments
Add file or drop files here

Submit

protected by reCAPTCHA
Privacy Terms



✉ sales@securly.com

☎ 1-855-SECURLY

🌐 www.securly.com

©2022. Logos and trademarks are the property of their respective companies. All rights reserved.